



A A L B E R T S D I S P E N S E T E C H N O L O G I E S

REPLACING A BAR GUN HANDLE VALVE/O-RING

Step by step image instruction on replacing a bar gun handle
valve/O-ring.

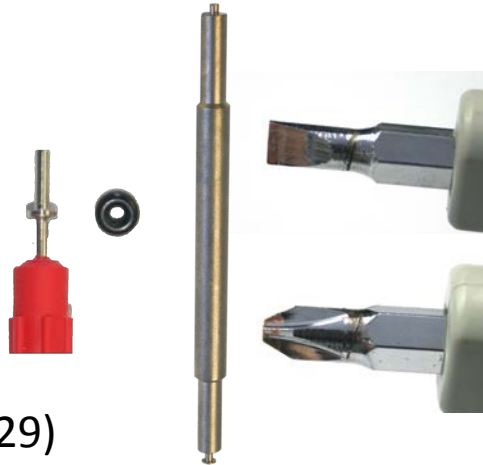
Presentation For
Field Technicians



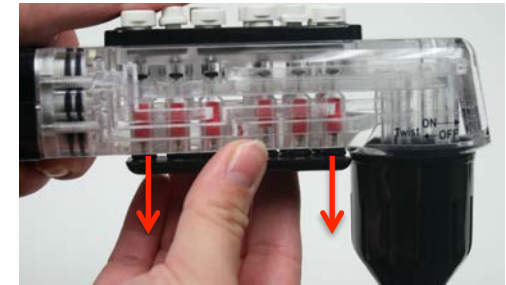
HOW TO REPLACE A BAR GUN HANDLE VALVE/ O-RING

- What you need

- Bar Gun Handle
- Phillips Head Screw Driver
- Flat Head Screw Driver
- O-ring Tool (316-0003)
- Replacement Valve (265-0483)
- Replacement O-ring (208-0003-429)



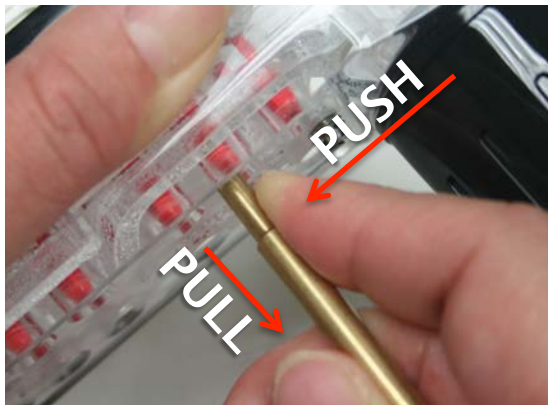
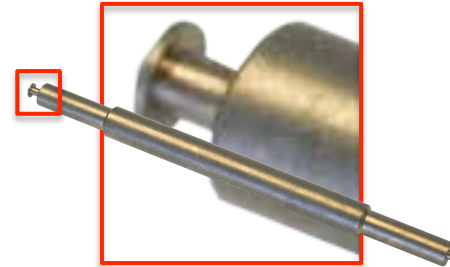
HOW TO REPLACE A BAR GUN HANDLE VALVE/ O-RING (CONT.)



- After all 5 screws have been removed, use the flat head screw driver to pop off the bottom plate
- Place the screw head in the slot indicated and twist the screw driver sideways
 - Tip: Place your finger over the plate as you pry it open so that it does not pop out too quickly due to the pressure from the springs
 - Tip: When removing the bottom plate, it is easiest to do it holding the bar gun level (as when pouring drinks) and moving the plate down away from the gun

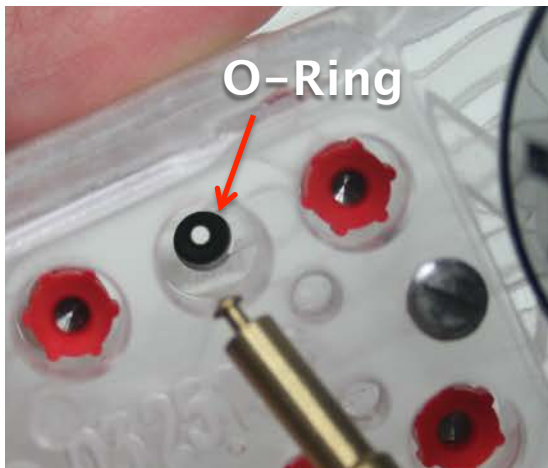
HOW TO REPLACE A BAR GUN HANDLE VALVE/ O-RING (CONT.)

- Removing a valve
 - Place the pointed end of the O-ring tool inside the valve
 - Apply slight pressure against the side of the valve and pull outwards while maintaining slight pressure against the valve
 - The valve will slide out of the handle



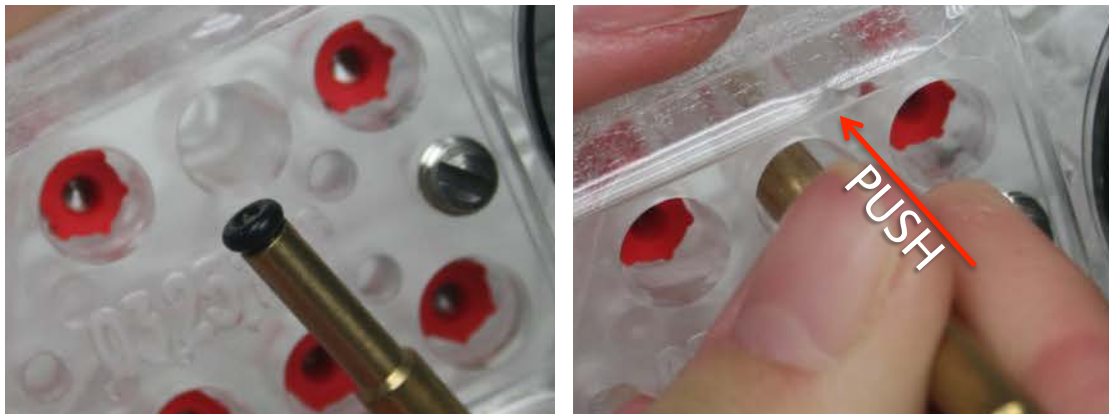
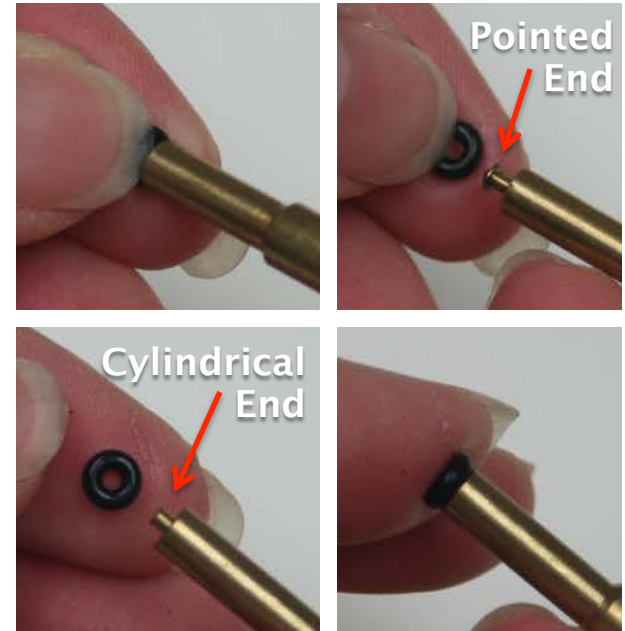
HOW TO REPLACE A BAR GUN HANDLE VALVE/ O-RING (CONT.)

- Removing an O-ring
 - **Note: The valve must be removed before you can reach the O-ring**
 - Place the pointed end of the O-ring tool all the way down into the valve cavity on the handle
 - Press down firmly into the valve cavity for the O-ring to hook onto the O-ring tool
 - Pull the O-ring tool out of the valve cavity
 - The O-ring should be secured around the tip of the O-ring
 - If not, repeat the step above

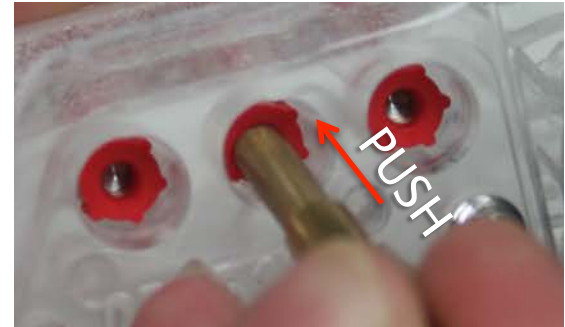


HOW TO REPLACE A BAR GUN HANDLE VALVE/ O-RING (CONT.)

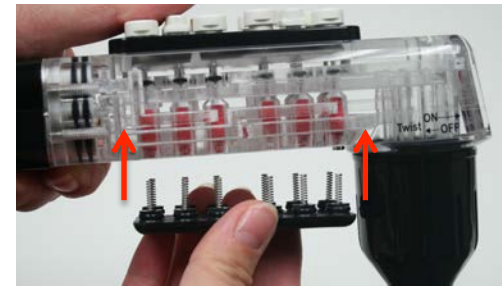
- Putting in the new O-ring
 - Remove the O-ring from the O-ring tool
 - Place the new O-ring on the cylindrical end of the O-ring tool
 - **Tip: It will stay in place, but take care as it can fall off easily**
 - Push the O-ring tool (with the new O-ring on) into the valve cavity in the handle
 - Press down firmly so that the new O-ring lodges in place



HOW TO REPLACE A BAR GUN HANDLE VALVE/ O-RING (CONT.)



- Replace the valve into the valve cavity in the handle
 - Press it down with the O-ring tool (no real force is needed)
- Replace the bottom plate onto the handle
 - Move the plate vertically upward onto the handle, moving the springs gently into place



HOW TO REPLACE A BAR GUN HANDLE VALVE/ O-RING (CONT.)

- Hold the plate firmly in place while you use the Phillips head screw driver to screw back in the 5 Phillips head screws
 - **Tip: Secure the middle screw first, but before tightening it all the way, secure the 4 remaining screws. This will help insure a true fit.**
 - Ensure all screws are tightly secured (**Maximum 6 – 8 in./lbs.**)
- You are now complete

